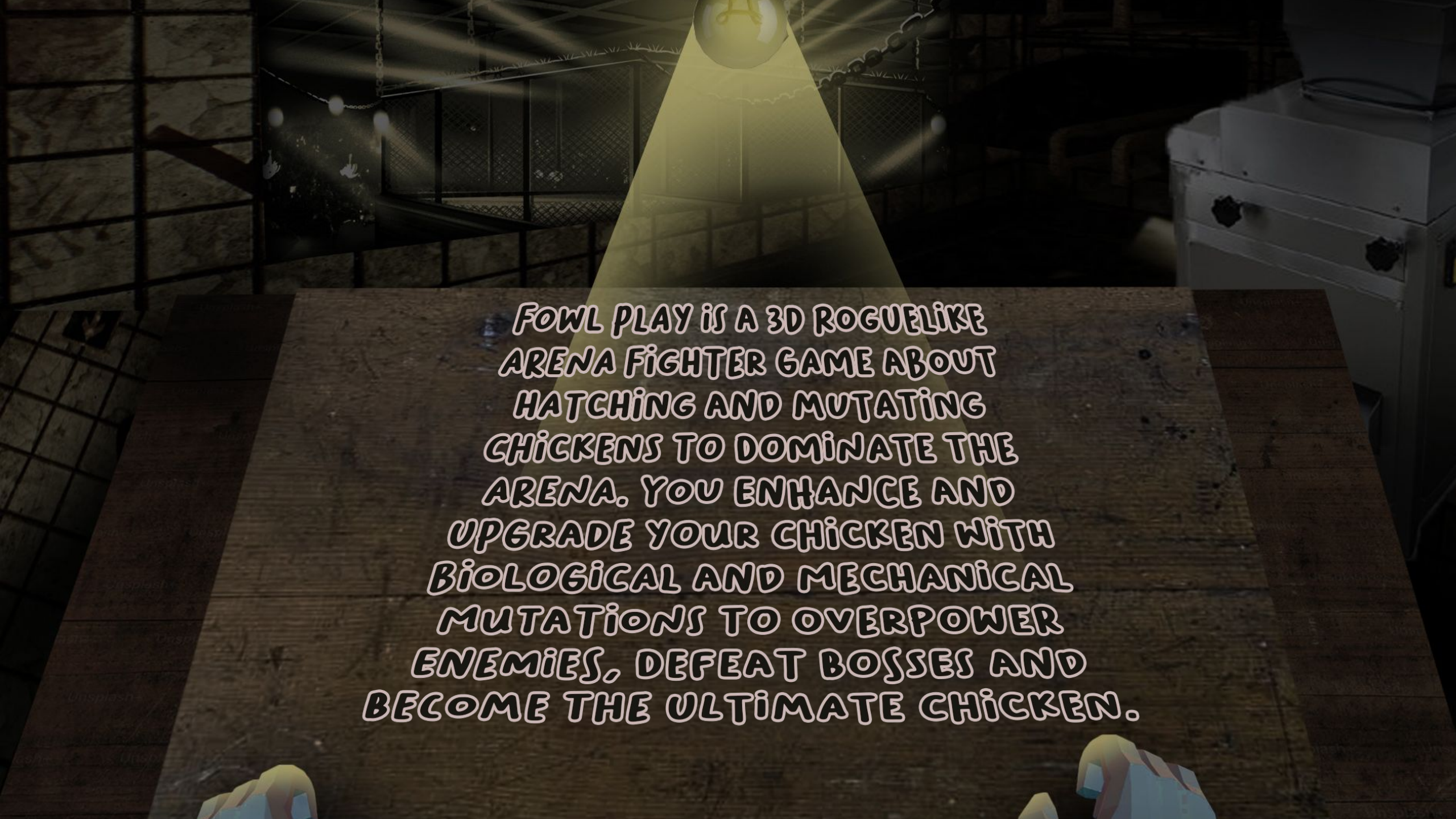




FOWL PLAY



The background image shows a dark, industrial-style arena. A bright yellow spotlight shines down from the top center, illuminating a small, white, chicken-like figure standing in the distance. The arena has a wooden floor in the foreground and a metal cage or barrier in the background. To the right, there is a large, white, mechanical-looking structure. The overall atmosphere is mysterious and high-tech.

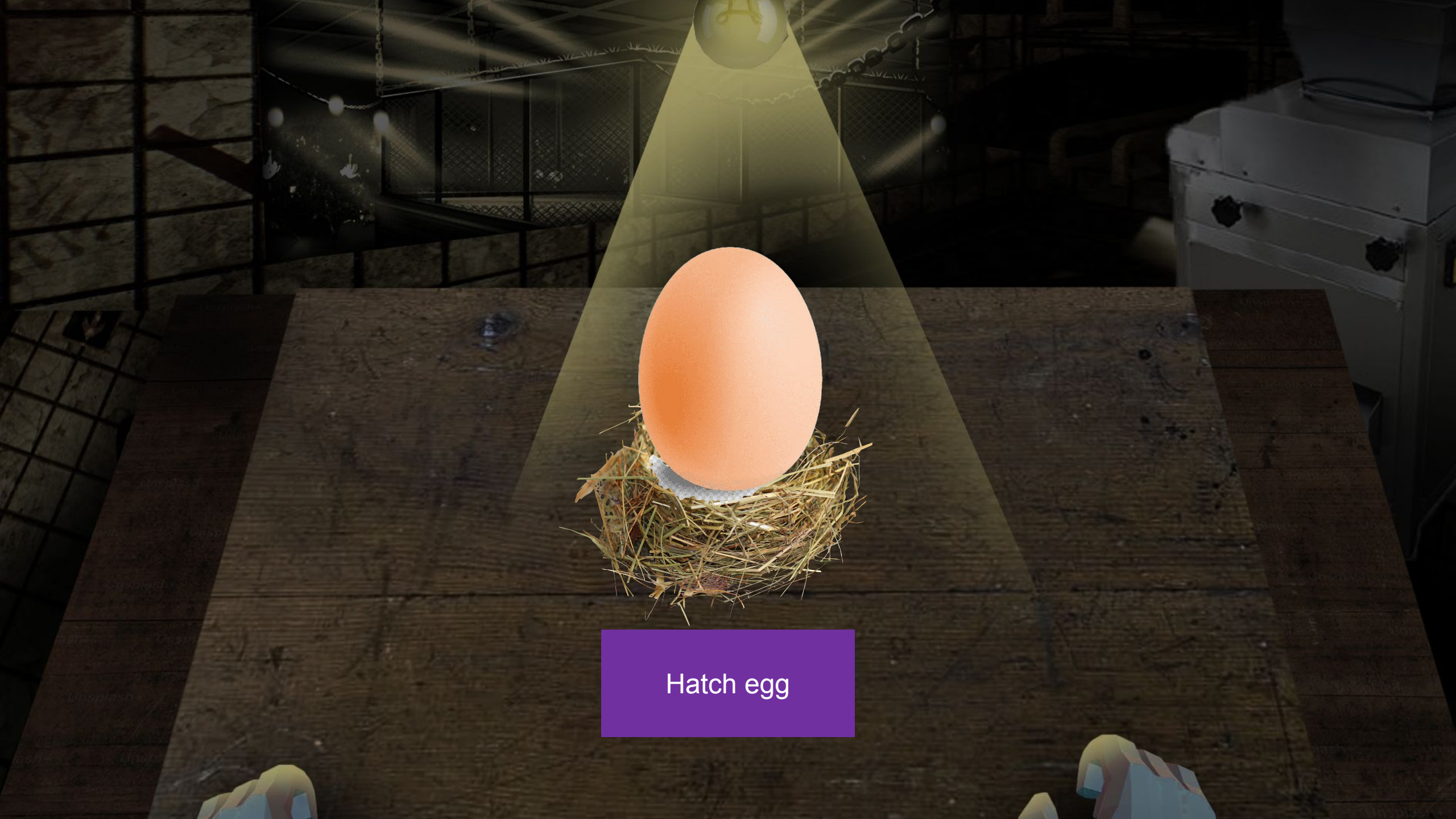
FOWL PLAY IS A 3D ROGUELIKE
ARENA FIGHTER GAME ABOUT
HATCHING AND MUTATING
CHICKENS TO DOMINATE THE
ARENA. YOU ENHANCE AND
UPGRADE YOUR CHICKEN WITH
BIOLOGICAL AND MECHANICAL
MUTATIONS TO OVERPOWER
ENEMIES, DEFEAT BOSSES AND
BECOME THE ULTIMATE CHICKEN.

Rules (gameplay)

- You have to manage your own chicken
- Mutating and Upgrading your chicken is allowed
- Your chicken must fight within the confines of the arena
- You can only win by eliminating your opponent
- Winning will earn you rewards
- You have to be 16+

(We are not responsible for any dead chickens)

- Sign up using your PC



Hatch egg

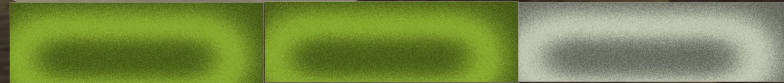
Chicken



UPGRADES

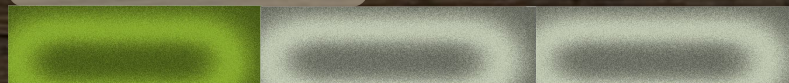


HEALTH



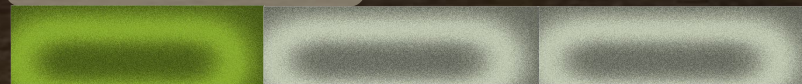
\$900

STRENGTH



\$500

STAMINA



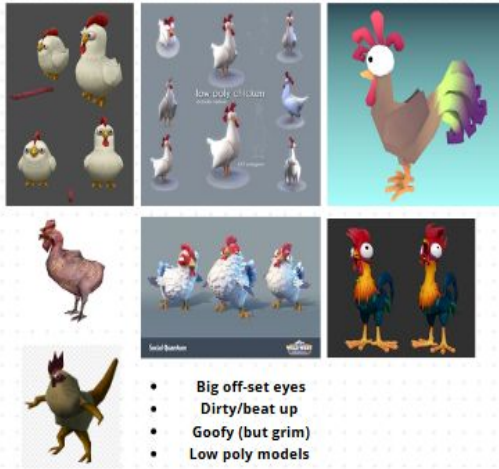
\$300

MOODBOARD CHICKEN FIGHTCLUB

Aesthetic/overall vibe



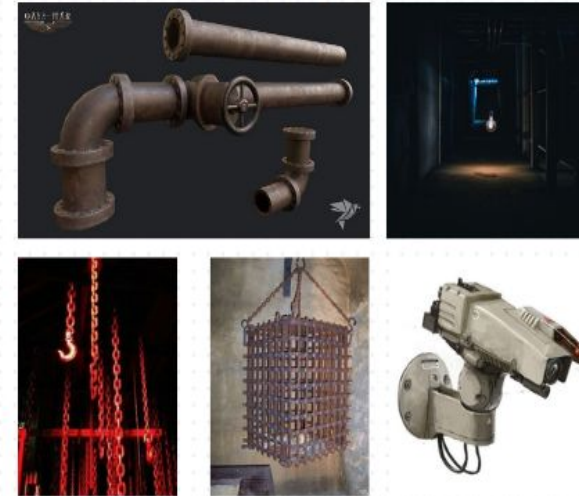
models



Main hub



props



Arena

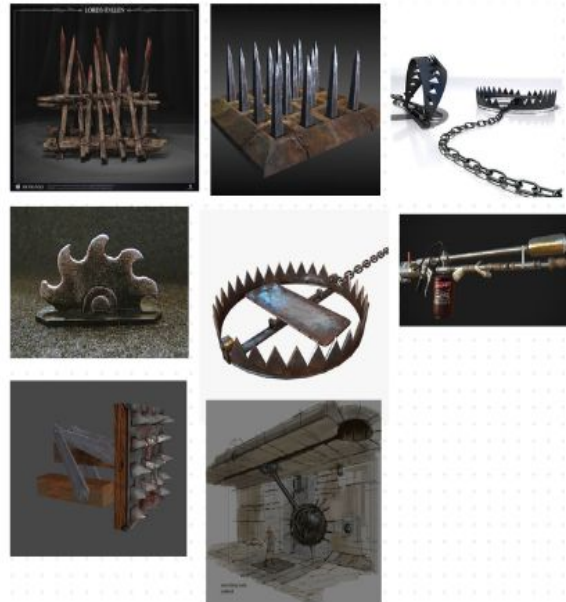


- Not too big arena
- Dim light, some areas highlighted (ex. hanging lightbulbs)
- People in the crowd (higher than the arena)

Inspo existing games



Environmental Hazard

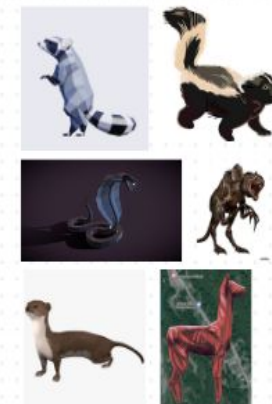


Enemies

Special Bosses
(Mutated chickens)



Small Bosses
(natural enemies)



FOWL PLAY

Press to start





FOWL PLAY



Coming Soon

More info at : <https://docs.studiofishbones.com>

